

HEALAFLOW

INJECTABLE IMPLANT AS ADDITIONAL TREATMENT DURING GLAUCOMA SURGERY

SLOW METABOLISATION & SLOW ABSORPTION

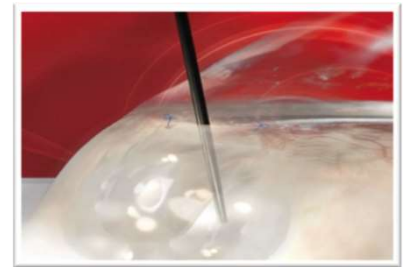
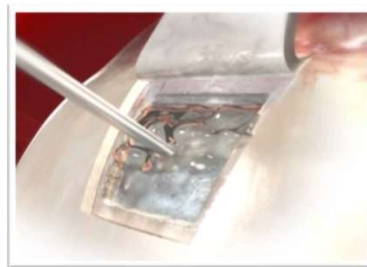
oerli
ophthalmedic®

www.oerli-ophthalmedic.ch

EYE SURGERY ESSENTIALS.

HealaFlow® is a slowly metabolised injectable implant which preserves the filtration function in the postoperative period of glaucoma surgery of adults.

It is made of NaHA produced by biofermentation. Injected under the scleral flap and the conjunctiva, it maintains the volume of the subconjunctival filtration space (filtering bleb).



1

BIOCOMPATIBLE & RESORBABLE

As NaHA is a natural component of the human tissues

HealaFlow® does not contain pharmaceuticals or materials of animal or human origin: raw materials are manufactured by biofermentation. HealaFlow® is recognized as a natural component.



2

COHESIVE STRUCTURE

No fragmentation & reduced migration risks

Due to its cross-linking (HA chains are associated by covalent bonds through BDDE [1]) HEALAFLOW®'s matrix:

- hardly splits, fragments or dissolves in aqueous environment.
- reduces risk of implant migration [2] into the eye anterior chamber.



3

LONG LASTING

And easy to inject

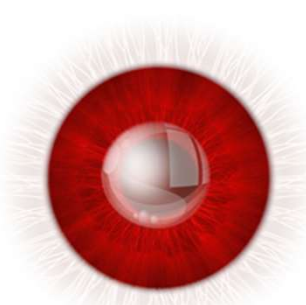
HealaFlow® is made up of cross-linked NaHA. Its particular matrix:

- offers long in-vivo lasting presence, at least up to 6 months.
- makes injections easier & more precise (retains injectability through 25G cannula).



[1] BDDE: 1,4-Butanediol Diglycidyl Ether is the safest cross-linking agent.

[2] Cohesiveness: From a scientific point of view, cohesiveness is the property by which the different parts of one body adhere, are connected to each other to form a "monoblock" structure. It does not mean it is solid.



INJECTABLE IMPLANT AS ADDITIONAL TREATMENT DURING GLAUCOMA SURGERY

SLOW METABOLISATION & SLOW ABSORPTION

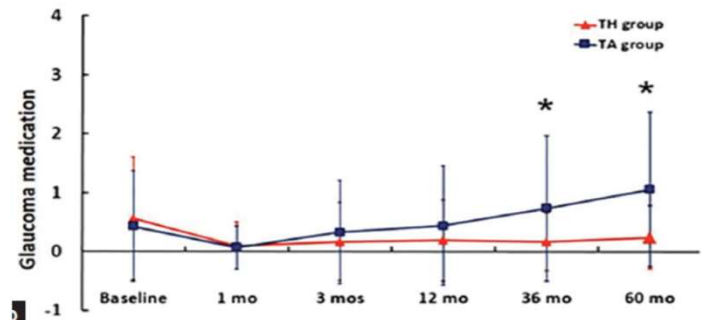
CLINICAL EFFECT OF HEALAFLOW®

1

REDUCTION OF GLAUCOMA MEDICATION

Combination of trabeculectomy with HealaFlow® (TH group) results in significant and long term reduction in the need of glaucoma medication, which exceeds the one achieved with trabeculectomy alone (TA group).

Wang X et al: Five Years' Outcomes of Trabeculectomy with Cross-linked Sodium Hyaluronate Gel Implantation for Chinese Glaucoma Patients. Chin Med J 2018;131:1562-8

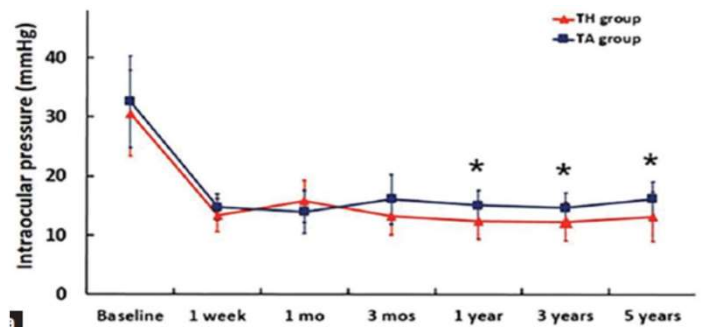


2

REDUCTION OF INTRAOCULAR PRESSURE

Combination of trabeculectomy with HealaFlow® (TH group) results in significant and long term IOP reduction, which exceeds the IOP reduction achieved with trabeculectomy alone (TA group).

Wang X et al: Five Years' Outcomes of Trabeculectomy with Cross-linked Sodium Hyaluronate Gel Implantation for Chinese Glaucoma Patients. Chin Med J 2018;131:1562-8

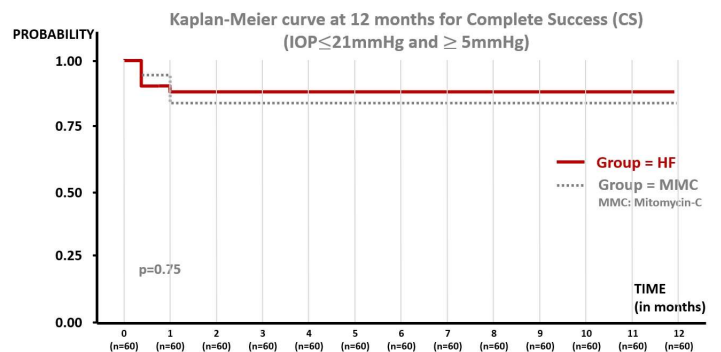


3

AS SAFE & EFFICACIOUS AS MMC IN TRABECULECTOMY

Comparison of the Kaplan–Meier curve between trabeculectomy with HealaFlow® (HF group) and trabeculectomy with Mitomycin-C (MMC group) shows no significant difference between the survival probabilities over of trabeculectomy results. Therefore, HealaFlow® is a novel and successful substitute for MMC as an adjunct in trabeculectomy.

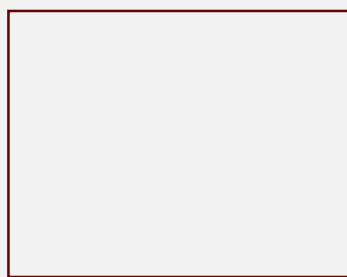
Crosslinked hyaluronic acid viscoelastic scleral implant in trabeculectomy - Mudhol, Rehka; Bansal, Rolika – IJP 69(5):1135-1141, May 2021.



Kaplan–Meier survival curve at 12 months for complete success (IOP ≤21 mmHg and ≥5 mmHg) or a reduction in preoperative IOP of ≥ 20% without antiglaucoma medication

TECHNICAL DATA

- HA concentration: 22.5 mg/ml
- Molecular weight: > 2.5 MDa
- Crosslinking agent: BDDE - 1.4
- Polymer origin: Biofermentation
- pH: Physiological pH (7.0)
- Osmolarity: Physiological (305 mOsm/kg)
- Endotoxin content: 0.5 EU/ml
- Low protein rate: < 50 ppm
- Sterilization: Autoclave sterilization



HEALAFLOW®
A WORLDWIDE EXCLUSIVITY OF

HEALAFLOW®
IS MANUFACTURED BY

SYRHA aptíssen

Chemin-du-Champ des Filles
36A
1228 Plan-les-Ouates
Switzerland

CE 1984