



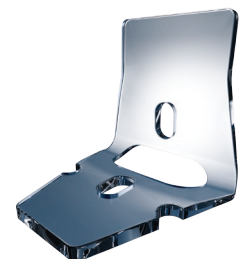
The future of vision

# ESNOOPER CLIP



## ESNOOPER CLIP Glaucoma Implant

Reference	VCLIP-AJL	Brand name	ESNOOPER CLIP
Definition	ESNOOPER CLIP uveoscleral implant.		
Indication	The ESNOOPER CLIP uveoscleral implant is indicated for non-penetrating deep sclerectomy (NPDS) in open-angle glaucoma surgery.		
Product description	<p>The ESNOOPER CLIP is a non-reabsorbable implant whose double-plate design provides two drainage channels: Trabecular (intraescleral and supraciliary) and uveoscleral. For implantation, the notched plate must be inserted in the suprachoroidal space and the upper plate is positioned on the scleral bed.</p> <p>The lateral notches mean the implant can be secured perfectly, thus preventing movement without the need for sutures.</p>		
Dimensions	5.50mm X 1.30mm X 2.20mm.		
Orifices	2 (drainage).		
Material	Hydroxyethyl Methacrylate (HEMA).		
Sterilisation method	Steam.		
Supply	The ESNOOPER CLIP implant comes in an individual sterile vial housed in a clamp support and immersed in a liquid medium to maintain proper device hydration.		
Quality Assurance	CE 0434 marking.	Shelf-life	3 years



### EPNP surgical equipment

Definition	EPNP Kit (non-penetrating deep sclerectomy).		
Brand name	KIT EPNP	Product code	AJL- KIT-001
Description	<p>The EPNP Kit is presented in a rigid plastic blister in which the following <b>references</b> are grouped (*):</p> <ul style="list-style-type: none"> <li>• <b>EPNP-2001</b> Liebermann Blepharo 14mm.</li> <li>• <b>EPNP-2002</b> Double Scleral Marker.</li> <li>• <b>EPNP-2003</b> Mermoud Spatula.</li> <li>• <b>EPNP-2004</b> Mermoud Clamp.</li> <li>• <b>EPNP-2005</b> Curved micro-scissor.</li> <li>• <b>PST-4600A</b> Sterilisation box (10x16x2 cm).</li> </ul>		
Sterilisation method	Non-sterile.	Quality Assurance	CE marking.



\* The instruments can be supplied as a set (EPNP Kit) or separately.

REV: 02